

TEST REPORT

Customer information	Client	SHENZHEN TENDA TECHNOLOGY CO., LTD.
	Address	6-8 Floor, Tower E3, No. 1001, Zhongshanyuan Road, Nanshan District, Shenzhen, China. 518052
Sample information	Name of sample	5-Port 10/ 100Mbps Desktop Switch with 4-Port PoE
	Type/Dimension	TEF1105P-4-63W
	Trade mark	----
	Lot number	----
	Manufacturer	----
	Address	----
Test information	Sample received	Aug. 18, 2015
	Testing date	Aug. 18, 2015~ Aug. 26, 2015
	Test sort	Commission Test
	Requested/item	RoHS directive 2011/65/EU
	Standard/Foundation	(1)With reference to IEC 62321-3-1:2013, scanning by XRF Spectroscopy (2)Chemical test method: With reference to IEC 62321-5:2013, determination of Lead, Cadmium, by ICP With reference to IEC 62321-4:2013, determination of Mercury by ICP With reference to IEC 62321:2008, determination of Hexavalent Chromium by Colorimetric method With reference to ☆IEC 62321-6:2015, determination of PBBs, PBDEs by GC-MS.
	Conclusion	The delivery sample complied with RoHS directive (2011/65/EU).
Remark	----	

Tested By: *Yang Su Ping* Checked By: *Liu Yaru* Approved By: *Billow*

Date: Aug. 27, 2015 Date: Aug. 27, 2015 Date: Aug. 27, 2015

No.	COMPONENTS	Item	Results of EDXRF (P/F/D)	Results of Testing (mg/kg)	Chemical testing limit (mg/kg)	Conclusion (P/F)
1-1	Back shell brown coating	Cd	P	/	<100	P
		Cr(VI)	P	/	<1000	P
		Hg	P	/	<1000	P
		Pb	P	/	<1000	P
		PBBs	P	/	<1000	P
		PBDEs	P	/	<1000	P
1-2	Back shell metal body	Cd	P	/	<100	P
		Cr(VI)	P	/	<1000	P
		Hg	P	/	<1000	P
		Pb	P	/	<1000	P
		PBBs	/	/	<1000	/
		PBDEs	/	/	<1000	/
1-3	Label	Cd	P	/	<100	P
		Cr(VI)	P	/	<1000	P
		Hg	P	/	<1000	P
		Pb	P	/	<1000	P
		PBBs	P	/	<1000	P
		PBDEs	P	/	<1000	P
1-4	Face-piece metal body	Cd	P	/	<100	P
		Cr(VI)	P	/	<1000	P
		Hg	P	/	<1000	P
		Pb	P	/	<1000	P
		PBBs	/	/	<1000	/
		PBDEs	/	/	<1000	/
1-5	Black metal screw	Cd	P	/	<100	P
		Cr(VI)	P	/	<1000	P
		Hg	P	/	<1000	P
		Pb	P	/	<1000	P
		PBBs	/	/	<1000	/
		PBDEs	/	/	<1000	/
1-6	Silvery metal screw	Cd	P	/	<100	P
		Cr(VI)	P	/	<1000	P
		Hg	P	/	<1000	P
		Pb	P	/	<1000	P
		PBBs	/	/	<1000	/
		PBDEs	/	/	<1000	/

No.	COMPONENTS	Item	Results of EDXRF (P/F/D)	Results of Testing (mg/kg)	Chemical testing limit (mg/kg)	Conclusion (P/F)
1-7	PCB plate	Cd	P	/	<100	P
		Cr(VI)	P	/	<1000	P
		Hg	P	/	<1000	P
		Pb	P	/	<1000	P
		PBBs	D	N.D.	<1000	P
		PBDEs	D	N.D.	<1000	P
1-8	Solder	Cd	P	/	<100	P
		Cr(VI)	P	/	<1000	P
		Hg	P	/	<1000	P
		Pb	P	/	<1000	P
		PBBs	/	/	<1000	/
		PBDEs	/	/	<1000	/
1-9	D22 glass diode	Cd	P	/	<100	P
		Cr(VI)	P	/	<1000	P
		Hg	P	/	<1000	P
		Pb	#P	/	<1000	#P
		PBBs	P	/	<1000	P
		PBDEs	P	/	<1000	P
1-10	U10 body	Cd	P	/	<100	P
		Cr(VI)	P	/	<1000	P
		Hg	P	/	<1000	P
		Pb	P	/	<1000	P
		PBBs	P	/	<1000	P
		PBDEs	P	/	<1000	P
1-11	U10 pin	Cd	P	/	<100	P
		Cr(VI)	P	/	<1000	P
		Hg	P	/	<1000	P
		Pb	P	/	<1000	P
		PBBs	/	/	<1000	/
		PBDEs	/	/	<1000	/
1-12	U6 body	Cd	P	/	<100	P
		Cr(VI)	P	/	<1000	P
		Hg	P	/	<1000	P
		Pb	P	/	<1000	P
		PBBs	P	/	<1000	P
		PBDEs	P	/	<1000	P

No.	COMPONENTS	Item	Results of EDXRF (P/F/D)	Results of Testing (mg/kg)	Chemical testing limit (mg/kg)	Conclusion (P/F)
1-13	U6 pin	Cd	P	/	<100	P
		Cr(VI)	P	/	<1000	P
		Hg	P	/	<1000	P
		Pb	P	/	<1000	P
		PBBs	/	/	<1000	/
		PBDEs	/	/	<1000	/
1-14	U1 body	Cd	P	/	<100	P
		Cr(VI)	P	/	<1000	P
		Hg	P	/	<1000	P
		Pb	P	/	<1000	P
		PBBs	P	/	<1000	P
		PBDEs	P	/	<1000	P
1-15	U2 body	Cd	P	/	<100	P
		Cr(VI)	P	/	<1000	P
		Hg	P	/	<1000	P
		Pb	P	/	<1000	P
		PBBs	P	/	<1000	P
		PBDEs	P	/	<1000	P
1-16	U2 pin	Cd	P	/	<100	P
		Cr(VI)	P	/	<1000	P
		Hg	P	/	<1000	P
		Pb	P	/	<1000	P
		PBBs	/	/	<1000	/
		PBDEs	/	/	<1000	/
1-17	U6 body	Cd	P	/	<100	P
		Cr(VI)	P	/	<1000	P
		Hg	P	/	<1000	P
		Pb	P	/	<1000	P
		PBBs	P	/	<1000	P
		PBDEs	P	/	<1000	P
1-18	D19 body	Cd	P	/	<100	P
		Cr(VI)	P	/	<1000	P
		Hg	P	/	<1000	P
		Pb	P	/	<1000	P
		PBBs	D	N.D.	<1000	P
		PBDEs	D	N.D.	<1000	P

No.	COMPONENTS	Item	Results of EDXRF (P/F/D)	Results of Testing (mg/kg)	Chemical testing limit (mg/kg)	Conclusion (P/F)
1-19	D19 pin	Cd	P	/	<100	P
		Cr(VI)	P	/	<1000	P
		Hg	P	/	<1000	P
		Pb	P	/	<1000	P
		PBBs	/	/	<1000	/
		PBDEs	/	/	<1000	/
1-20	C105 SMD capacitor	Cd	P	/	<100	P
		Cr(VI)	P	/	<1000	P
		Hg	P	/	<1000	P
		Pb	P	/	<1000	P
		PBBs	P	/	<1000	P
		PBDEs	P	/	<1000	P
1-21	Q6 body	Cd	P	/	<100	P
		Cr(VI)	P	/	<1000	P
		Hg	P	/	<1000	P
		Pb	P	/	<1000	P
		PBBs	P	/	<1000	P
		PBDEs	P	/	<1000	P
1-22	Q6 pin	Cd	P	/	<100	P
		Cr(VI)	P	/	<1000	P
		Hg	P	/	<1000	P
		Pb	P	/	<1000	P
		PBBs	/	/	<1000	/
		PBDEs	/	/	<1000	/
1-23	RJ1 black plastic	Cd	P	/	<100	P
		Cr(VI)	P	/	<1000	P
		Hg	P	/	<1000	P
		Pb	P	/	<1000	P
		PBBs	D	N.D.	<1000	P
		PBDEs	D	N.D.	<1000	P
1-24	RJ1 metal needle	Cd	P	/	<100	P
		Cr(VI)	P	/	<1000	P
		Hg	P	/	<1000	P
		Pb	P	/	<1000	P
		PBBs	/	/	<1000	/
		PBDEs	/	/	<1000	/

No.	COMPONENTS	Item	Results of EDXRF (P/F/D)	Results of Testing (mg/kg)	Chemical testing limit (mg/kg)	Conclusion (P/F)
1-25	SW1 black key	Cd	P	/	<100	P
		Cr(VI)	P	/	<1000	P
		Hg	P	/	<1000	P
		Pb	P	/	<1000	P
		PBBs	P	/	<1000	P
		PBDEs	P	/	<1000	P
1-26	SW1 metal shell	Cd	P	/	<100	P
		Cr(VI)	D	Negative	<1000	P
		Hg	P	/	<1000	P
		Pb	P	/	<1000	P
		PBBs	/	/	<1000	/
		PBDEs	/	/	<1000	/
1-27	SW1 metal clip	Cd	P	/	<100	P
		Cr(VI)	D	Negative	<1000	P
		Hg	P	/	<1000	P
		Pb	P	/	<1000	P
		PBBs	/	/	<1000	/
		PBDEs	/	/	<1000	/
1-28	SW1 plastic plate	Cd	P	/	<100	P
		Cr(VI)	P	/	<1000	P
		Hg	P	/	<1000	P
		Pb	P	/	<1000	P
		PBBs	P	/	<1000	P
		PBDEs	P	/	<1000	P
1-29	SW1 pin	Cd	P	/	<100	P
		Cr(VI)	P	/	<1000	P
		Hg	P	/	<1000	P
		Pb	P	/	<1000	P
		PBBs	/	/	<1000	/
		PBDEs	/	/	<1000	/
1-30	SW1 spring	Cd	P	/	<100	P
		Cr(VI)	P	/	<1000	P
		Hg	P	/	<1000	P
		Pb	P	/	<1000	P
		PBBs	/	/	<1000	/
		PBDEs	/	/	<1000	/

No.	COMPONENTS	Item	Results of EDXRF (P/F/D)	Results of Testing (mg/kg)	Chemical testing limit (mg/kg)	Conclusion (P/F)
1-31	T4 black plastic cover	Cd	P	/	<100	P
		Cr(VI)	P	/	<1000	P
		Hg	P	/	<1000	P
		Pb	P	/	<1000	P
		PBBs	P	/	<1000	P
		PBDEs	P	/	<1000	P
1-32	T4 black plastic substrate	Cd	P	/	<100	P
		Cr(VI)	P	/	<1000	P
		Hg	P	/	<1000	P
		Pb	P	/	<1000	P
		PBBs	D	N.D.	<1000	P
		PBDEs	D	N.D.	<1000	P
1-33	T4 pin	Cd	P	/	<100	P
		Cr(VI)	P	/	<1000	P
		Hg	P	/	<1000	P
		Pb	P	/	<1000	P
		PBBs	/	/	<1000	/
		PBDEs	/	/	<1000	/
1-34	T4 magnetic core	Cd	P	/	<100	P
		Cr(VI)	P	/	<1000	P
		Hg	P	/	<1000	P
		Pb	P	/	<1000	P
		PBBs	/	/	<1000	/
		PBDEs	/	/	<1000	/
1-35	T4 coil	Cd	P	/	<100	P
		Cr(VI)	P	/	<1000	P
		Hg	P	/	<1000	P
		Pb	P	/	<1000	P
		PBBs	/	/	<1000	/
		PBDEs	/	/	<1000	/
1-36	T3 black plastic shell	Cd	P	/	<100	P
		Cr(VI)	P	/	<1000	P
		Hg	P	/	<1000	P
		Pb	P	/	<1000	P
		PBBs	P	/	<1000	P
		PBDEs	P	/	<1000	P

No.	COMPONENTS	Item	Results of EDXRF (P/F/D)	Results of Testing (mg/kg)	Chemical testing limit (mg/kg)	Conclusion (P/F)
1-37	T3 black package glue	Cd	P	/	<100	P
		Cr(VI)	P	/	<1000	P
		Hg	P	/	<1000	P
		Pb	P	/	<1000	P
		PBBs	P	/	<1000	P
		PBDEs	P	/	<1000	P
1-38	T3 magnetic ring	Cd	P	/	<100	P
		Cr(VI)	P	/	<1000	P
		Hg	P	/	<1000	P
		Pb	P	/	<1000	P
		PBBs	/	/	<1000	/
		PBDEs	/	/	<1000	/
1-39	T3 coil	Cd	P	/	<100	P
		Cr(VI)	P	/	<1000	P
		Hg	P	/	<1000	P
		Pb	P	/	<1000	P
		PBBs	/	/	<1000	/
		PBDEs	/	/	<1000	/
1-40	Y1 metal shell	Cd	P	/	<100	P
		Cr(VI)	P	/	<1000	P
		Hg	P	/	<1000	P
		Pb	P	/	<1000	P
		PBBs	/	/	<1000	/
		PBDEs	/	/	<1000	/
1-41	Y1 contents	Cd	P	/	<100	P
		Cr(VI)	P	/	<1000	P
		Hg	P	/	<1000	P
		Pb	P	/	<1000	P
		PBBs	/	/	<1000	/
		PBDEs	/	/	<1000	/
1-42	C88 green outer jacket	Cd	P	/	<100	P
		Cr(VI)	P	/	<1000	P
		Hg	P	/	<1000	P
		Pb	P	/	<1000	P
		PBBs	P	/	<1000	P
		PBDEs	P	/	<1000	P

No.	COMPONENTS	Item	Results of EDXRF (P/F/D)	Results of Testing (mg/kg)	Chemical testing limit (mg/kg)	Conclusion (P/F)
1-43	C88 aluminum shell	Cd	P	/	<100	P
		Cr(VI)	P	/	<1000	P
		Hg	P	/	<1000	P
		Pb	P	/	<1000	P
		PBBs	/	/	<1000	/
		PBDEs	/	/	<1000	/
1-44	C88 contents	Cd	P	/	<100	P
		Cr(VI)	P	/	<1000	P
		Hg	P	/	<1000	P
		Pb	P	/	<1000	P
		PBBs	P	/	<1000	P
		PBDEs	P	/	<1000	P
1-45	C88 rubber plug	Cd	P	/	<100	P
		Cr(VI)	P	/	<1000	P
		Hg	P	/	<1000	P
		Pb	P	/	<1000	P
		PBBs	P	/	<1000	P
		PBDEs	P	/	<1000	P
1-46	C88 pin	Cd	P	/	<100	P
		Cr(VI)	P	/	<1000	P
		Hg	P	/	<1000	P
		Pb	P	/	<1000	P
		PBBs	/	/	<1000	/
		PBDEs	/	/	<1000	/
1-47	L5 red outer jacket	Cd	P	/	<100	P
		Cr(VI)	P	/	<1000	P
		Hg	P	/	<1000	P
		Pb	P	/	<1000	P
		PBBs	P	/	<1000	P
		PBDEs	P	/	<1000	P
1-48	L5 magnetic core	Cd	P	/	<100	P
		Cr(VI)	P	/	<1000	P
		Hg	P	/	<1000	P
		Pb	P	/	<1000	P
		PBBs	/	/	<1000	/
		PBDEs	/	/	<1000	/

No.	COMPONENTS	Item	Results of EDXRF (P/F/D)	Results of Testing (mg/kg)	Chemical testing limit (mg/kg)	Conclusion (P/F)
1-49	L5 coil	Cd	P	/	<100	P
		Cr(VI)	P	/	<1000	P
		Hg	P	/	<1000	P
		Pb	P	/	<1000	P
		PBBs	/	/	<1000	/
		PBDEs	/	/	<1000	/
1-50	U9 body	Cd	P	/	<100	P
		Cr(VI)	P	/	<1000	P
		Hg	P	/	<1000	P
		Pb	P	/	<1000	P
		PBBs	D	N.D.	<1000	P
		PBDEs	D	N.D.	<1000	P
1-51	U9 pin	Cd	P	/	<100	P
		Cr(VI)	P	/	<1000	P
		Hg	P	/	<1000	P
		Pb	P	/	<1000	P
		PBBs	/	/	<1000	/
		PBDEs	/	/	<1000	/
1-52	T6 yellow adhesive tape	Cd	P	/	<100	P
		Cr(VI)	P	/	<1000	P
		Hg	P	/	<1000	P
		Pb	P	/	<1000	P
		PBBs	P	/	<1000	P
		PBDEs	P	/	<1000	P
1-53	T6 black magnetic core	Cd	P	/	<100	P
		Cr(VI)	P	/	<1000	P
		Hg	P	/	<1000	P
		Pb	P	/	<1000	P
		PBBs	/	/	<1000	/
		PBDEs	/	/	<1000	/
1-54	T6 black framework	Cd	P	/	<100	P
		Cr(VI)	P	/	<1000	P
		Hg	P	/	<1000	P
		Pb	P	/	<1000	P
		PBBs	P	/	<1000	P
		PBDEs	P	/	<1000	P

No.	COMPONENTS	Item	Results of EDXRF (P/F/D)	Results of Testing (mg/kg)	Chemical testing limit (mg/kg)	Conclusion (P/F)
1-55	T6 coil	Cd	P	/	<100	P
		Cr(VI)	P	/	<1000	P
		Hg	P	/	<1000	P
		Pb	P	/	<1000	P
		PBBs	/	/	<1000	/
		PBDEs	/	/	<1000	/
1-56	T6 pin	Cd	P	/	<100	P
		Cr(VI)	P	/	<1000	P
		Hg	P	/	<1000	P
		Pb	P	/	<1000	P
		PBBs	/	/	<1000	/
		PBDEs	/	/	<1000	/
1-57	L4 coil	Cd	P	/	<100	P
		Cr(VI)	P	/	<1000	P
		Hg	P	/	<1000	P
		Pb	P	/	<1000	P
		PBBs	/	/	<1000	/
		PBDEs	/	/	<1000	/
1-58	L4 magnetic core	Cd	P	/	<100	P
		Cr(VI)	P	/	<1000	P
		Hg	P	/	<1000	P
		Pb	P	/	<1000	P
		PBBs	/	/	<1000	/
		PBDEs	/	/	<1000	/
1-59	L4 plastic sheet	Cd	P	/	<100	P
		Cr(VI)	P	/	<1000	P
		Hg	P	/	<1000	P
		Pb	P	/	<1000	P
		PBBs	P	/	<1000	P
		PBDEs	P	/	<1000	P
1-60	L4 black glue	Cd	P	/	<100	P
		Cr(VI)	P	/	<1000	P
		Hg	P	/	<1000	P
		Pb	P	/	<1000	P
		PBBs	P	/	<1000	P
		PBDEs	P	/	<1000	P

No.	COMPONENTS	Item	Results of EDXRF (P/F/D)	Results of Testing (mg/kg)	Chemical testing limit (mg/kg)	Conclusion (P/F)
1-61	J2 black plastic shell	Cd	P	/	<100	P
		Cr(VI)	P	/	<1000	P
		Hg	P	/	<1000	P
		Pb	P	/	<1000	P
		PBBs	P	/	<1000	P
		PBDEs	P	/	<1000	P
1-62	J2 metal needle	Cd	P	/	<100	P
		Cr(VI)	P	/	<1000	P
		Hg	P	/	<1000	P
		Pb	P	/	<1000	P
		PBBs	/	/	<1000	/
		PBDEs	/	/	<1000	/
1-63	J2 metal spring sheet	Cd	P	/	<100	P
		Cr(VI)	P	/	<1000	P
		Hg	P	/	<1000	P
		Pb	P	/	<1000	P
		PBBs	/	/	<1000	/
		PBDEs	/	/	<1000	/
1-64	J2 pin	Cd	P	/	<100	P
		Cr(VI)	P	/	<1000	P
		Hg	P	/	<1000	P
		Pb	P	/	<1000	P
		PBBs	/	/	<1000	/
		PBDEs	/	/	<1000	/
1-65	Power line black outer jacket	Cd	P	/	<100	P
		Cr(VI)	P	/	<1000	P
		Hg	P	/	<1000	P
		Pb	P	/	<1000	P
		PBBs	P	/	<1000	P
		PBDEs	P	/	<1000	P
1-66	Power line brown wire jacket	Cd	P	/	<100	P
		Cr(VI)	P	/	<1000	P
		Hg	P	/	<1000	P
		Pb	P	/	<1000	P
		PBBs	P	/	<1000	P
		PBDEs	P	/	<1000	P

No.	COMPONENTS	Item	Results of EDXRF (P/F/D)	Results of Testing (mg/kg)	Chemical testing limit (mg/kg)	Conclusion (P/F)
1-67	Power line blue wire jacket	Cd	P	/	<100	P
		Cr(VI)	P	/	<1000	P
		Hg	P	/	<1000	P
		Pb	P	/	<1000	P
		PBBs	P	/	<1000	P
		PBDEs	P	/	<1000	P
1-68	Power line yellow wire jacket	Cd	P	/	<100	P
		Cr(VI)	P	/	<1000	P
		Hg	P	/	<1000	P
		Pb	P	/	<1000	P
		PBBs	P	/	<1000	P
		PBDEs	P	/	<1000	P
1-69	Power line metal wire core	Cd	P	/	<100	P
		Cr(VI)	P	/	<1000	P
		Hg	P	/	<1000	P
		Pb	P	/	<1000	P
		PBBs	/	/	<1000	/
		PBDEs	/	/	<1000	/
1-70	Bundle black outer jacket	Cd	P	/	<100	P
		Cr(VI)	P	/	<1000	P
		Hg	P	/	<1000	P
		Pb	P	/	<1000	P
		PBBs	P	/	<1000	P
		PBDEs	P	/	<1000	P
1-71	Bundle metal wire core	Cd	P	/	<100	P
		Cr(VI)	P	/	<1000	P
		Hg	P	/	<1000	P
		Pb	P	/	<1000	P
		PBBs	/	/	<1000	/
		PBDEs	/	/	<1000	/
1-72	Male plug black protective sleeve	Cd	P	/	<100	P
		Cr(VI)	P	/	<1000	P
		Hg	P	/	<1000	P
		Pb	P	/	<1000	P
		PBBs	P	/	<1000	P
		PBDEs	P	/	<1000	P

No.	COMPONENTS	Item	Results of EDXRF (P/F/D)	Results of Testing (mg/kg)	Chemical testing limit (mg/kg)	Conclusion (P/F)
1-73	Male plug black plastic core	Cd	P	/	<100	P
		Cr(VI)	P	/	<1000	P
		Hg	P	/	<1000	P
		Pb	P	/	<1000	P
		PBBs	D	N.D.	<1000	P
		PBDEs	D	13	<1000	P
1-74	Male plug metal needle	Cd	P	/	<100	P
		Cr(VI)	P	/	<1000	P
		Hg	P	/	<1000	P
		Pb	P	/	<1000	P
		PBBs	/	/	<1000	/
		PBDEs	/	/	<1000	/
1-75	Male plug metal sheet	Cd	P	/	<100	P
		Cr(VI)	P	/	<1000	P
		Hg	P	/	<1000	P
		Pb	P	/	<1000	P
		PBBs	/	/	<1000	/
		PBDEs	/	/	<1000	/
1-76	Female plug black protective sleeve	Cd	P	/	<100	P
		Cr(VI)	P	/	<1000	P
		Hg	P	/	<1000	P
		Pb	P	/	<1000	P
		PBBs	P	/	<1000	P
		PBDEs	P	/	<1000	P
1-77	Female plug white plastic core	Cd	P	/	<100	P
		Cr(VI)	P	/	<1000	P
		Hg	P	/	<1000	P
		Pb	P	/	<1000	P
		PBBs	D	N.D.	<1000	P
		PBDEs	D	N.D.	<1000	P
1-78	Female plug metal needle	Cd	P	/	<100	P
		Cr(VI)	P	/	<1000	P
		Hg	P	/	<1000	P
		Pb	P	/	<1000	P
		PBBs	/	/	<1000	/
		PBDEs	/	/	<1000	/

2.

No.	COMPONENTS	Item	Results of EDXRF (P/F/D)	Results of Testing (mg/kg)	Chemical testing limit (mg/kg)	Conclusion (P/F)
2-1	Adapter black plastic back shell	Cd	P	/	<100	P
		Cr(VI)	P	/	<1000	P
		Hg	P	/	<1000	P
		Pb	P	/	<1000	P
		PBBs	P	/	<1000	P
		PBDEs	P	/	<1000	P
2-2	Adapter label	Cd	P	/	<100	P
		Cr(VI)	P	/	<1000	P
		Hg	P	/	<1000	P
		Pb	P	/	<1000	P
		PBBs	P	/	<1000	P
		PBDEs	P	/	<1000	P
2-3	Adapter black plastic face-piece	Cd	P	/	<100	P
		Cr(VI)	P	/	<1000	P
		Hg	P	/	<1000	P
		Pb	P	/	<1000	P
		PBBs	P	/	<1000	P
		PBDEs	P	/	<1000	P
2-4	Adapter gray heat-conducting glue block	Cd	P	/	<100	P
		Cr(VI)	P	/	<1000	P
		Hg	P	/	<1000	P
		Pb	P	/	<1000	P
		PBBs	P	/	<1000	P
		PBDEs	P	/	<1000	P
2-5	Adapter PCB plate	Cd	P	/	<100	P
		Cr(VI)	P	/	<1000	P
		Hg	P	/	<1000	P
		Pb	P	/	<1000	P
		PBBs	D	N.D.	<1000	P
		PBDEs	D	N.D.	<1000	P
2-6	Adapter solder	Cd	P	/	<100	P
		Cr(VI)	P	/	<1000	P
		Hg	P	/	<1000	P
		Pb	P	/	<1000	P
		PBBs	/	/	<1000	/
		PBDEs	/	/	<1000	/

No.	COMPONENTS	Item	Results of EDXRF (P/F/D)	Results of Testing (mg/kg)	Chemical testing limit (mg/kg)	Conclusion (P/F)
2-7	Adapter C7 SMD capacitor	Cd	P	/	<100	P
		Cr(VI)	P	/	<1000	P
		Hg	P	/	<1000	P
		Pb	P	/	<1000	P
		PBBs	P	/	<1000	P
		PBDEs	P	/	<1000	P
2-8	Adapter ZD1 glass diode	Cd	P	/	<100	P
		Cr(VI)	P	/	<1000	P
		Hg	P	/	<1000	P
		Pb	#P	/	<1000	#P
		PBBs	P	/	<1000	P
		PBDEs	P	/	<1000	P
2-9	Socket black plastic	Cd	P	/	<100	P
		Cr(VI)	P	/	<1000	P
		Hg	P	/	<1000	P
		Pb	P	/	<1000	P
		PBBs	D	N.D.	<1000	P
		PBDEs	D	N.D.	<1000	P
2-10	Socket metal needle	Cd	P	/	<100	P
		Cr(VI)	P	/	<1000	P
		Hg	P	/	<1000	P
		Pb	P	/	<1000	P
		PBBs	/	/	<1000	/
		PBDEs	/	/	<1000	/
2-11	Socket pin	Cd	P	/	<100	P
		Cr(VI)	P	/	<1000	P
		Hg	P	/	<1000	P
		Pb	P	/	<1000	P
		PBBs	/	/	<1000	/
		PBDEs	/	/	<1000	/
2-12	RT1 body	Cd	P	/	<100	P
		Cr(VI)	P	/	<1000	P
		Hg	P	/	<1000	P
		Pb	P	/	<1000	P
		PBBs	P	/	<1000	P
		PBDEs	P	/	<1000	P

No.	COMPONENTS	Item	Results of EDXRF (P/F/D)	Results of Testing (mg/kg)	Chemical testing limit (mg/kg)	Conclusion (P/F)
2-13	RT1 pin	Cd	P	/	<100	P
		Cr(VI)	P	/	<1000	P
		Hg	P	/	<1000	P
		Pb	P	/	<1000	P
		PBBs	/	/	<1000	/
		PBDEs	/	/	<1000	/
2-14	F1 black tube	Cd	P	/	<100	P
		Cr(VI)	P	/	<1000	P
		Hg	P	/	<1000	P
		Pb	P	/	<1000	P
		PBBs	P	/	<1000	P
		PBDEs	P	/	<1000	P
2-15	F1 body	Cd	P	/	<100	P
		Cr(VI)	P	/	<1000	P
		Hg	P	/	<1000	P
		Pb	P	/	<1000	P
		PBBs	P	/	<1000	P
		PBDEs	P	/	<1000	P
2-16	F1 pin	Cd	P	/	<100	P
		Cr(VI)	P	/	<1000	P
		Hg	P	/	<1000	P
		Pb	P	/	<1000	P
		PBBs	/	/	<1000	/
		PBDEs	/	/	<1000	/
2-17	Industrial coil	Cd	P	/	<100	P
		Cr(VI)	P	/	<1000	P
		Hg	P	/	<1000	P
		Pb	P	/	<1000	P
		PBBs	/	/	<1000	/
		PBDEs	/	/	<1000	/
2-18	Industrial magnetic ring	Cd	P	/	<100	P
		Cr(VI)	P	/	<1000	P
		Hg	P	/	<1000	P
		Pb	P	/	<1000	P
		PBBs	/	/	<1000	/
		PBDEs	/	/	<1000	/

No.	COMPONENTS	Item	Results of EDXRF (P/F/D)	Results of Testing (mg/kg)	Chemical testing limit (mg/kg)	Conclusion (P/F)
2-19	Industrial plastic sheet	Cd	P	/	<100	P
		Cr(VI)	P	/	<1000	P
		Hg	P	/	<1000	P
		Pb	P	/	<1000	P
		PBBs	P	/	<1000	P
		PBDEs	P	/	<1000	P
2-20	Industrial black glue	Cd	P	/	<100	P
		Cr(VI)	P	/	<1000	P
		Hg	P	/	<1000	P
		Pb	P	/	<1000	P
		PBBs	P	/	<1000	P
		PBDEs	P	/	<1000	P
2-21	BD1 body	Cd	P	/	<100	P
		Cr(VI)	P	/	<1000	P
		Hg	P	/	<1000	P
		Pb	P	/	<1000	P
		PBBs	D	N.D.	<1000	P
		PBDEs	D	N.D.	<1000	P
2-22	C6 body	Cd	P	/	<100	P
		Cr(VI)	P	/	<1000	P
		Hg	P	/	<1000	P
		Pb	P	/	<1000	P
		PBBs	P	/	<1000	P
		PBDEs	P	/	<1000	P
2-23	Q2 body	Cd	P	/	<100	P
		Cr(VI)	P	/	<1000	P
		Hg	P	/	<1000	P
		Pb	P	/	<1000	P
		PBBs	D	N.D.	<1000	P
		PBDEs	D	N.D.	<1000	P
2-24	Q2 pin	Cd	P	/	<100	P
		Cr(VI)	P	/	<1000	P
		Hg	P	/	<1000	P
		Pb	P	/	<1000	P
		PBBs	/	/	<1000	/
		PBDEs	/	/	<1000	/

No.	COMPONENTS	Item	Results of EDXRF (P/F/D)	Results of Testing (mg/kg)	Chemical testing limit (mg/kg)	Conclusion (P/F)
2-25	Black screw	Cd	P	/	<100	P
		Cr(VI)	P	/	<1000	P
		Hg	P	/	<1000	P
		Pb	P	/	<1000	P
		PBBs	/	/	<1000	/
		PBDEs	/	/	<1000	/
2-26	Silvery nut	Cd	P	/	<100	P
		Cr(VI)	P	/	<1000	P
		Hg	P	/	<1000	P
		Pb	P	/	<1000	P
		PBBs	/	/	<1000	/
		PBDEs	/	/	<1000	/
2-27	D3 body	Cd	P	/	<100	P
		Cr(VI)	P	/	<1000	P
		Hg	P	/	<1000	P
		Pb	P	/	<1000	P
		PBBs	D	N.D.	<1000	P
		PBDEs	D	N.D.	<1000	P
2-28	D3 pin	Cd	P	/	<100	P
		Cr(VI)	P	/	<1000	P
		Hg	P	/	<1000	P
		Pb	P	/	<1000	P
		PBBs	/	/	<1000	/
		PBDEs	/	/	<1000	/
2-29	T1 yellow adhesive tape	Cd	P	/	<100	P
		Cr(VI)	P	/	<1000	P
		Hg	P	/	<1000	P
		Pb	P	/	<1000	P
		PBBs	P	/	<1000	P
		PBDEs	P	/	<1000	P
2-30	T1 black framework	Cd	P	/	<100	P
		Cr(VI)	P	/	<1000	P
		Hg	P	/	<1000	P
		Pb	P	/	<1000	P
		PBBs	P	/	<1000	P
		PBDEs	P	/	<1000	P

No.	COMPONENTS	Item	Results of EDXRF (P/F/D)	Results of Testing (mg/kg)	Chemical testing limit (mg/kg)	Conclusion (P/F)
2-31	T1 black magnetic core	Cd	P	/	<100	P
		Cr(VI)	P	/	<1000	P
		Hg	P	/	<1000	P
		Pb	P	/	<1000	P
		PBBs	/	/	<1000	/
		PBDEs	/	/	<1000	/
2-32	T1 coil	Cd	P	/	<100	P
		Cr(VI)	P	/	<1000	P
		Hg	P	/	<1000	P
		Pb	P	/	<1000	P
		PBBs	/	/	<1000	/
		PBDEs	/	/	<1000	/
2-33	T1 pin	Cd	P	/	<100	P
		Cr(VI)	P	/	<1000	P
		Hg	P	/	<1000	P
		Pb	P	/	<1000	P
		PBBs	/	/	<1000	/
		PBDEs	/	/	<1000	/
2-34	T1 yellow wire jacket	Cd	P	/	<100	P
		Cr(VI)	P	/	<1000	P
		Hg	P	/	<1000	P
		Pb	P	/	<1000	P
		PBBs	P	/	<1000	P
		PBDEs	P	/	<1000	P
2-35	T1 transparent wire jacket	Cd	P	/	<100	P
		Cr(VI)	P	/	<1000	P
		Hg	P	/	<1000	P
		Pb	P	/	<1000	P
		PBBs	P	/	<1000	P
		PBDEs	P	/	<1000	P
2-36	Industrial coil	Cd	P	/	<100	P
		Cr(VI)	P	/	<1000	P
		Hg	P	/	<1000	P
		Pb	P	/	<1000	P
		PBBs	/	/	<1000	/
		PBDEs	/	/	<1000	/

No.	COMPONENTS	Item	Results of EDXRF (P/F/D)	Results of Testing (mg/kg)	Chemical testing limit (mg/kg)	Conclusion (P/F)
2-37	Industrial magnetic ring	Cd	P	/	<100	P
		Cr(VI)	P	/	<1000	P
		Hg	P	/	<1000	P
		Pb	P	/	<1000	P
		PBBs	/	/	<1000	/
		PBDEs	/	/	<1000	/
2-38	EC25 green outer jacket	Cd	P	/	<100	P
		Cr(VI)	P	/	<1000	P
		Hg	P	/	<1000	P
		Pb	P	/	<1000	P
		PBBs	P	/	<1000	P
		PBDEs	P	/	<1000	P
2-39	EC25 aluminum shell	Cd	P	/	<100	P
		Cr(VI)	P	/	<1000	P
		Hg	P	/	<1000	P
		Pb	P	/	<1000	P
		PBBs	/	/	<1000	/
		PBDEs	/	/	<1000	/
2-40	EC25 contents	Cd	P	/	<100	P
		Cr(VI)	P	/	<1000	P
		Hg	P	/	<1000	P
		Pb	P	/	<1000	P
		PBBs	P	/	<1000	P
		PBDEs	P	/	<1000	P
2-41	EC25 rubber plug	Cd	P	/	<100	P
		Cr(VI)	P	/	<1000	P
		Hg	P	/	<1000	P
		Pb	P	/	<1000	P
		PBBs	P	/	<1000	P
		PBDEs	P	/	<1000	P
2-42	EC25 pin	Cd	P	/	<100	P
		Cr(VI)	P	/	<1000	P
		Hg	P	/	<1000	P
		Pb	P	/	<1000	P
		PBBs	/	/	<1000	/
		PBDEs	/	/	<1000	/

No.	COMPONENTS	Item	Results of EDXRF (P/F/D)	Results of Testing (mg/kg)	Chemical testing limit (mg/kg)	Conclusion (P/F)
2-43	EC25 yellow adhesive tape	Cd	P	/	<100	P
		Cr(VI)	P	/	<1000	P
		Hg	P	/	<1000	P
		Pb	P	/	<1000	P
		PBBs	P	/	<1000	P
		PBDEs	P	/	<1000	P
2-44	Radiator metal sheet	Cd	P	/	<100	P
		Cr(VI)	P	/	<1000	P
		Hg	P	/	<1000	P
		Pb	P	/	<1000	P
		PBBs	/	/	<1000	/
		PBDEs	/	/	<1000	/
2-45	Radiator pin	Cd	P	/	<100	P
		Cr(VI)	P	/	<1000	P
		Hg	P	/	<1000	P
		Pb	P	/	<1000	P
		PBBs	/	/	<1000	/
		PBDEs	/	/	<1000	/
2-46	White glue	Cd	P	/	<100	P
		Cr(VI)	P	/	<1000	P
		Hg	P	/	<1000	P
		Pb	P	/	<1000	P
		PBBs	P	/	<1000	P
		PBDEs	P	/	<1000	P
2-47	EC2 black outer jacket	Cd	P	/	<100	P
		Cr(VI)	P	/	<1000	P
		Hg	P	/	<1000	P
		Pb	P	/	<1000	P
		PBBs	P	/	<1000	P
		PBDEs	P	/	<1000	P
2-48	Electrolytic capacitor brown outer jacket	Cd	P	/	<100	P
		Cr(VI)	P	/	<1000	P
		Hg	P	/	<1000	P
		Pb	P	/	<1000	P
		PBBs	P	/	<1000	P
		PBDEs	P	/	<1000	P

No.	COMPONENTS	Item	Results of EDXRF (P/F/D)	Results of Testing (mg/kg)	Chemical testing limit (mg/kg)	Conclusion (P/F)
2-49	X capacitor yellow outer shell	Cd	P	/	<100	P
		Cr(VI)	P	/	<1000	P
		Hg	P	/	<1000	P
		Pb	P	/	<1000	P
		PBBs	D	N.D.	<1000	P
		PBDEs	D	N.D.	<1000	P
2-50	X capacitor package glue	Cd	P	/	<100	P
		Cr(VI)	P	/	<1000	P
		Hg	P	/	<1000	P
		Pb	P	/	<1000	P
		PBBs	D	N.D.	<1000	P
		PBDEs	D	N.D.	<1000	P
2-51	X capacitor contents	Cd	P	/	<100	P
		Cr(VI)	P	/	<1000	P
		Hg	P	/	<1000	P
		Pb	P	/	<1000	P
		PBBs	P	/	<1000	P
		PBDEs	P	/	<1000	P
2-52	X capacitor pin	Cd	P	/	<100	P
		Cr(VI)	P	/	<1000	P
		Hg	P	/	<1000	P
		Pb	P	/	<1000	P
		PBBs	/	/	<1000	/
		PBDEs	/	/	<1000	/
2-53	RV1 body	Cd	P	/	<100	P
		Cr(VI)	P	/	<1000	P
		Hg	P	/	<1000	P
		Pb	P	/	<1000	P
		PBBs	P	/	<1000	P
		PBDEs	P	/	<1000	P
2-54	Wire rod black outer jacket	Cd	P	/	<100	P
		Cr(VI)	P	/	<1000	P
		Hg	P	/	<1000	P
		Pb	P	/	<1000	P
		PBBs	P	/	<1000	P
		PBDEs	P	/	<1000	P

No.	COMPONENTS	Item	Results of EDXRF (P/F/D)	Results of Testing (mg/kg)	Chemical testing limit (mg/kg)	Conclusion (P/F)
2-55	Wire rod metal wire core	Cd	P	/	<100	P
		Cr(VI)	P	/	<1000	P
		Hg	P	/	<1000	P
		Pb	P	/	<1000	P
		PBBs	/	/	<1000	/
		PBDEs	/	/	<1000	/
2-56	Bundle black outer jacket	Cd	P	/	<100	P
		Cr(VI)	P	/	<1000	P
		Hg	P	/	<1000	P
		Pb	P	/	<1000	P
		PBBs	P	/	<1000	P
		PBDEs	P	/	<1000	P
2-57	Bundle metal wire core	Cd	P	/	<100	P
		Cr(VI)	P	/	<1000	P
		Hg	P	/	<1000	P
		Pb	P	/	<1000	P
		PBBs	/	/	<1000	/
		PBDEs	/	/	<1000	/
2-58	Black protective sleeve	Cd	P	/	<100	P
		Cr(VI)	P	/	<1000	P
		Hg	P	/	<1000	P
		Pb	P	/	<1000	P
		PBBs	P	/	<1000	P
		PBDEs	P	/	<1000	P
2-59	Plug black protective sleeve	Cd	P	/	<100	P
		Cr(VI)	P	/	<1000	P
		Hg	P	/	<1000	P
		Pb	P	/	<1000	P
		PBBs	P	/	<1000	P
		PBDEs	P	/	<1000	P
2-60	Plug contact pin metal outer core	Cd	P	/	<100	P
		Cr(VI)	P	/	<1000	P
		Hg	P	/	<1000	P
		Pb	P	/	<1000	P
		PBBs	/	/	<1000	/
		PBDEs	/	/	<1000	/

No.	COMPONENTS	Item	Results of EDXRF (P/F/D)	Results of Testing (mg/kg)	Chemical testing limit (mg/kg)	Conclusion (P/F)
2-61	Contact pin solder	Cd	P	/	<100	P
		Cr(VI)	P	/	<1000	P
		Hg	P	/	<1000	P
		Pb	P	/	<1000	P
		PBBs	/	/	<1000	/
		PBDEs	/	/	<1000	/
2-62	Contact pin metal inner core	Cd	P	/	<100	P
		Cr(VI)	P	/	<1000	P
		Hg	P	/	<1000	P
		Pb	P	/	<1000	P
		PBBs	/	/	<1000	/
		PBDEs	/	/	<1000	/
2-63	Contact pin black plastic core	Cd	P	/	<100	P
		Cr(VI)	P	/	<1000	P
		Hg	P	/	<1000	P
		Pb	P	/	<1000	P
		PBBs	D	N.D.	<1000	P
		PBDEs	D	N.D.	<1000	P

Remark:

- (1) It is the result on total Br while test PBBs and PBDEs by EDXRF. It is the result on total Cr while test Hexavalent Chromium by EDXRF.
- (2) Results are obtained by EDXRF for primary screening, and chemical testing by ICP (for Cd, Pb, Hg), UV-VIS (Cr(VI)) and GCMS (for PBBs, PBDEs) is recommended to be performed, if the concentration exceeds the below warning value (unit:mg/kg)

Element	Polymer	Metal	Composite Materials
Cd	$P \leq 70-3\sigma < D < 130+3\sigma \leq F$	$P \leq 70-3\sigma < D < 130+3\sigma \leq F$	$P \leq 50-3\sigma < D < 150+3\sigma \leq F$
Pb	$P \leq 700-3\sigma < D < 1300+3\sigma \leq F$	$P \leq 700-3\sigma < D < 1300+3\sigma \leq F$	$P \leq 500-3\sigma < D < 1500+3\sigma \leq F$
Hg	$P \leq 700-3\sigma < D < 1300+3\sigma \leq F$	$P \leq 700-3\sigma < D < 1300+3\sigma \leq F$	$P \leq 500-3\sigma < D < 1500+3\sigma \leq F$
Br	$P \leq 300-3\sigma < D$	----	$P \leq 250-3\sigma < D$
Cr	$P \leq 700-3\sigma < D$	$P \leq 700-3\sigma < D$	$P \leq 500-3\sigma < D$

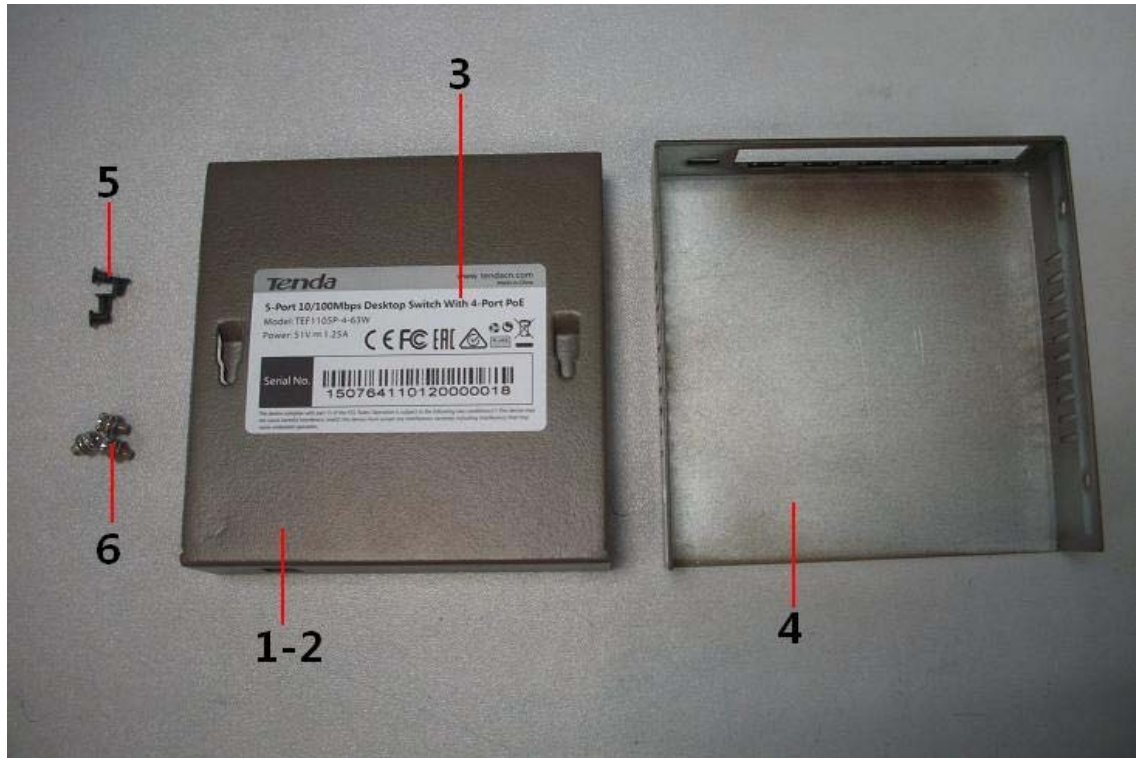
P = PASS; F = FAIL; D = DETECTED;

- (3) mg/kg = ppm; N.D. = NOT DETECTED (<MDL) Pb, Cd, Hg, Cr(VI): 2mg/kg; PBBs, PBDEs: 5mg/kg
- (4) According to IEC 62321:2008, result on Cr (VI) for metal sample is shown as Positive/Negative. Positive = Presence of Cr(VI) coating, Negative = Absence of Cr(VI) coating
- (5) # According to Annex III of European Council Directive 2011/65/EU, Electrical and electronic components containing lead in a glass or ceramic other than dielectric ceramic in capacitors, e.g. piezoelectronic devices, or in a glass or ceramic matrix compound is exempted.

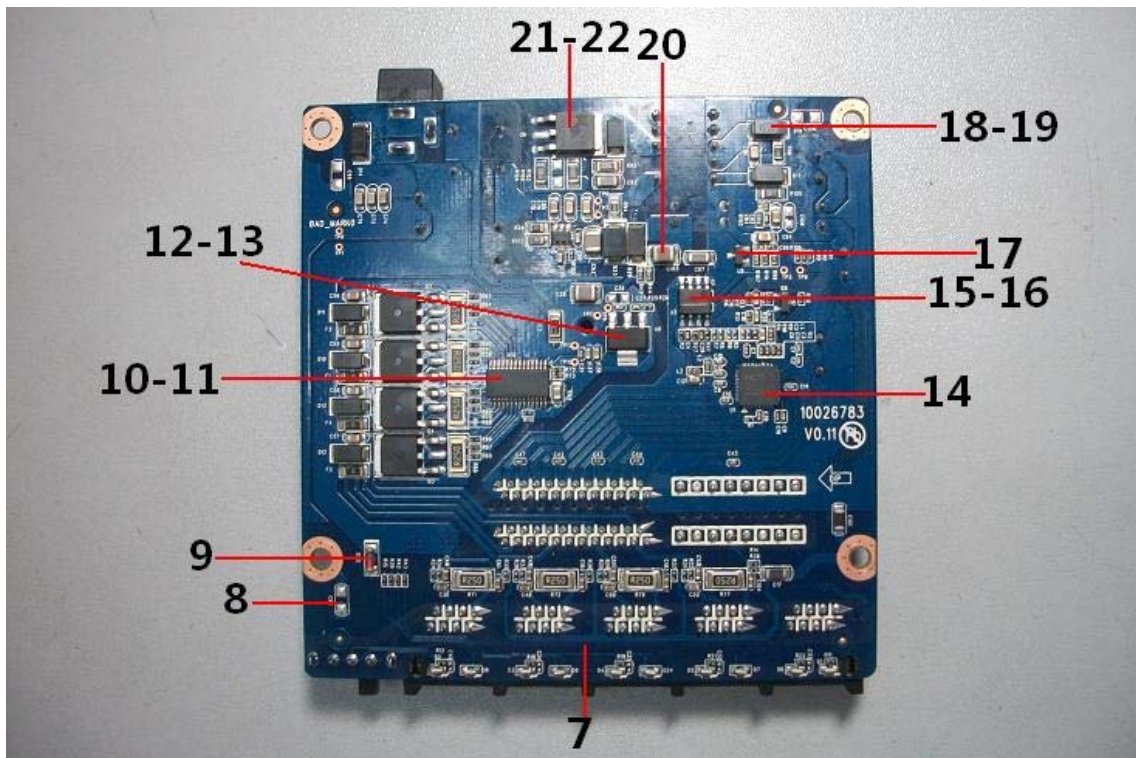
Sample photo



Detailed Split Chart

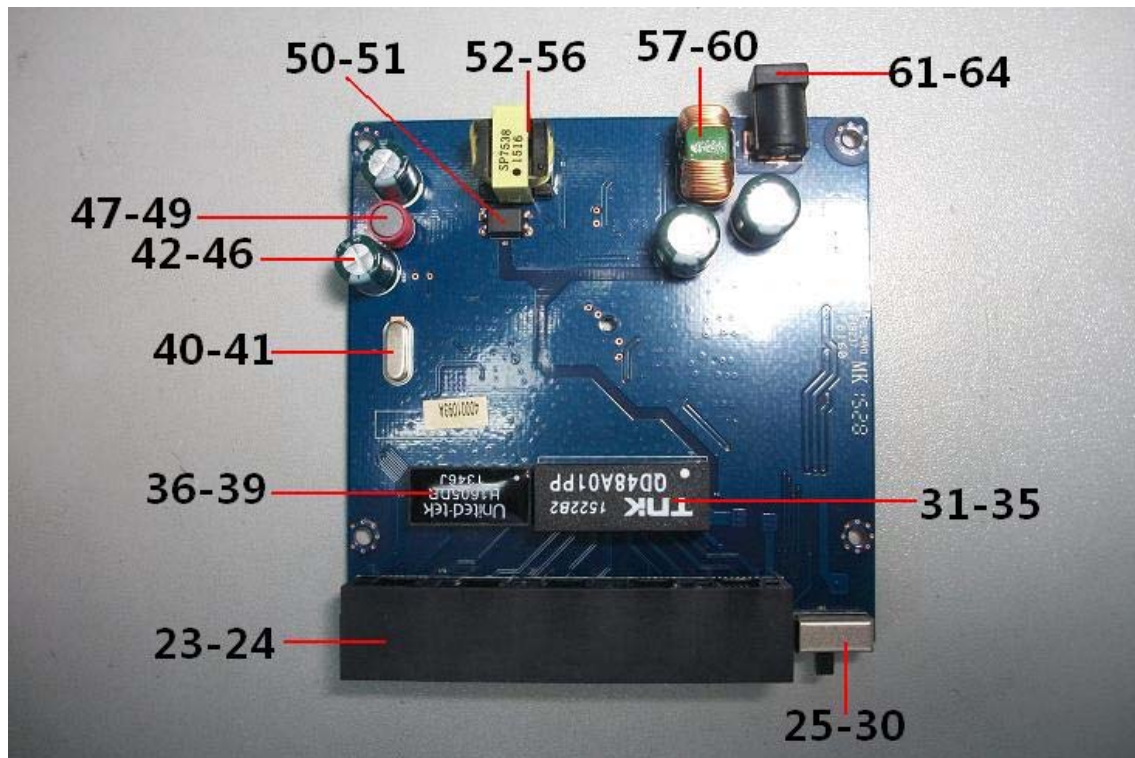


Part 1

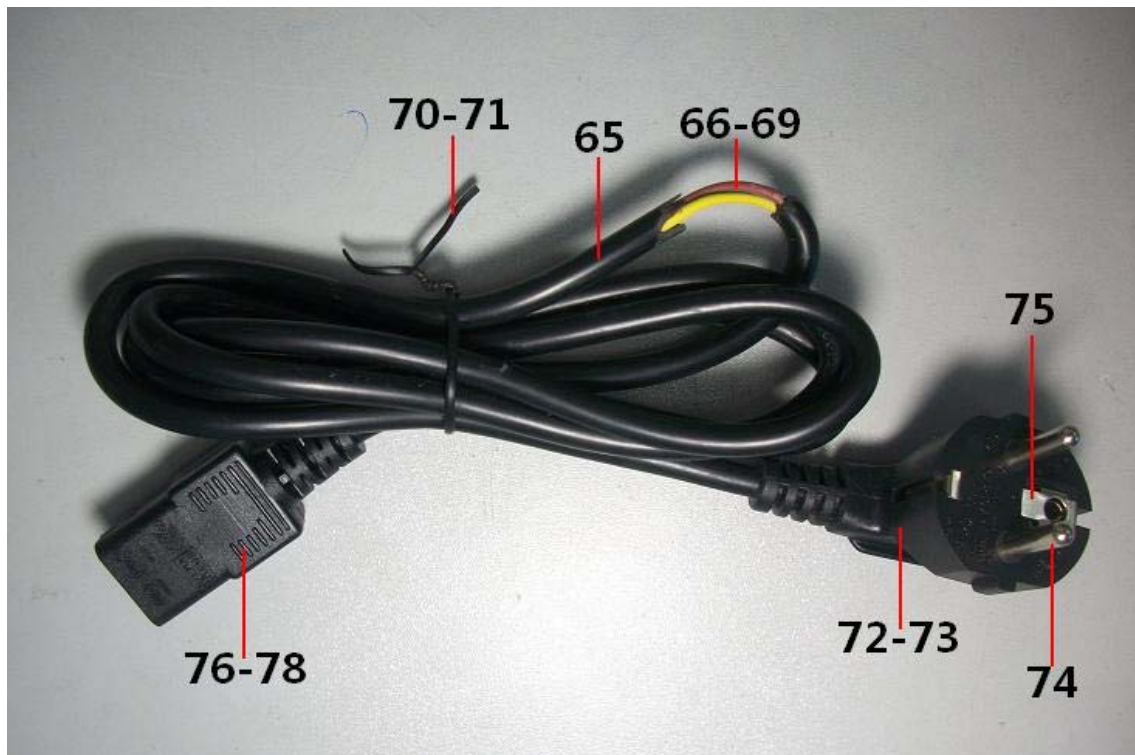


Part 1

Detailed Split Chart



Part 1

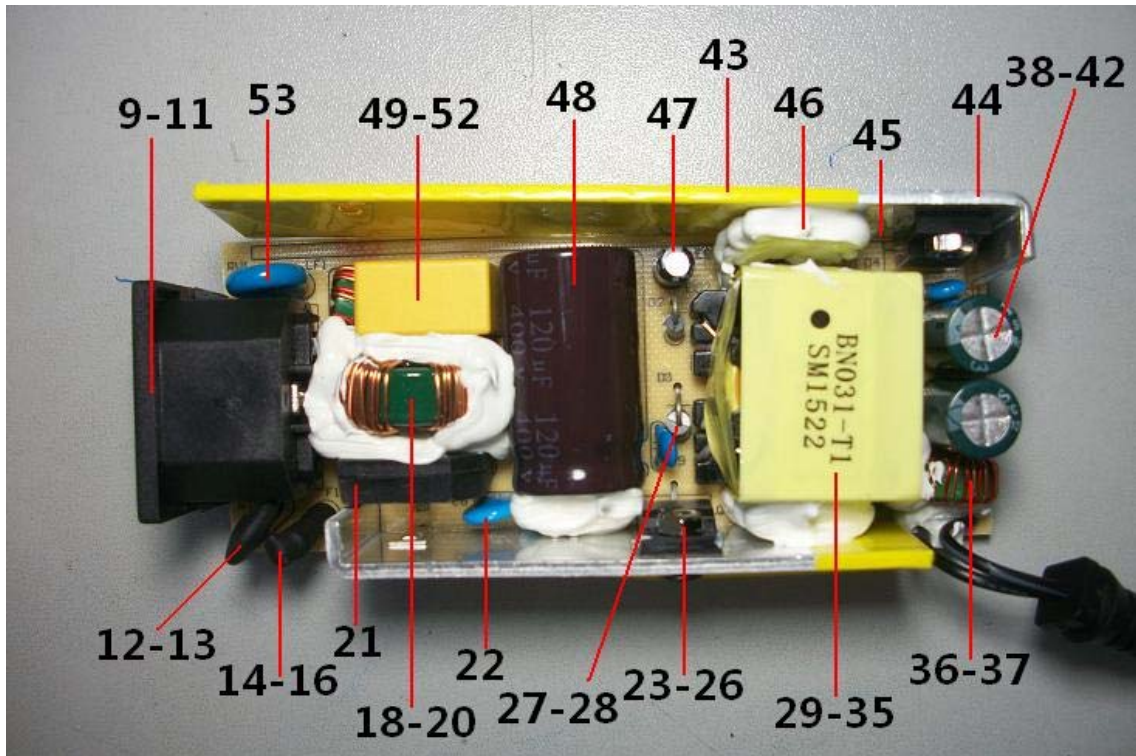


Part 1

Detailed Split Chart



Part 2



Part 2

Detailed Split Chart



Part 2

List of apparatus:

No.	Name	Model	Calibration Valid Date	USE(√)
1	ICP-OES	VISTA-MPX	2015/09/21	
2	GC-MS	5975i	2015/09/21	√
3	UV-Vis	Lambda 25	2016/06/08	√
4	XRF	EDX3000B	2016/06/25	√

***** END OF REPORT *****

STATEMENT

1. The test report is invalid without stamp of laboratory.
2. The test report is invalid without signature of person(s) testing and authorizing.
3. The test report is invalid if erased and corrected.
4. Test results of the report is valid to the test samples if sampling by client.
5. “☆” item to be outside the scope of authorized by CNAS.
6. The test report shall not be reproduced except in full, without written approval of the laboratory.
7. If there is any objection to report, the client should inform issuing laboratory within 15 days from the date of receiving test report.